

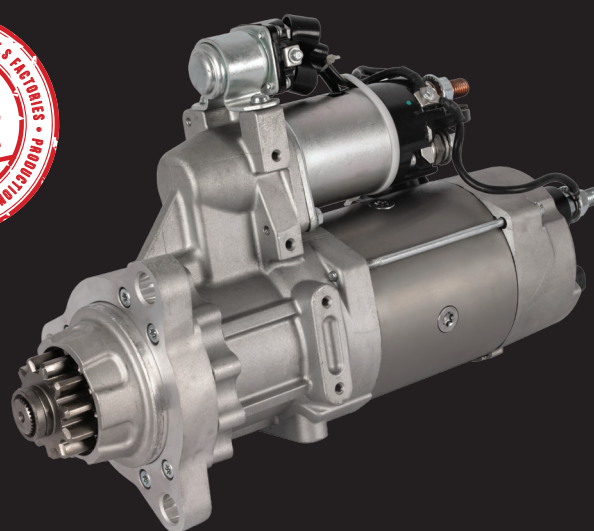
PRODUCT RANGE UPDATE



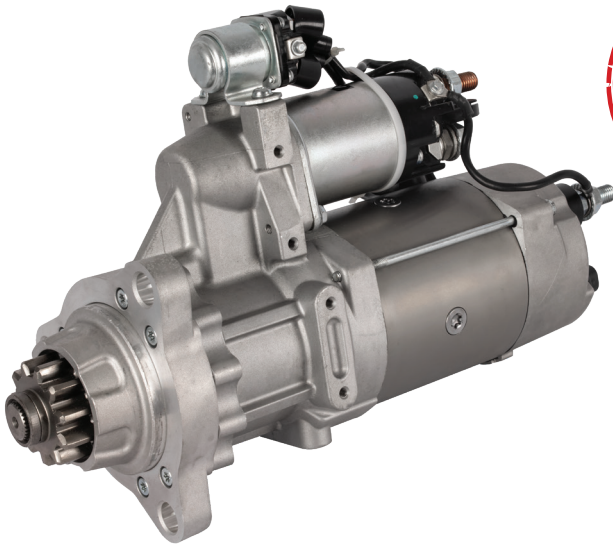
ON & OFF-ROAD ALTERNATORS & STARTER MOTORS



Introducing the Jaylec range of Heavy Duty alternators and starter motors for US Driveline applications, a cost effective alternative to higher-priced OEM units. These premium quality units are rigorously tested to withstand Australian road conditions and are manufactured in facilities with OEM and OES production. Shipped directly to Australia, they offer exceptional value, helping you and your customers save without compromising on performance or reliability.



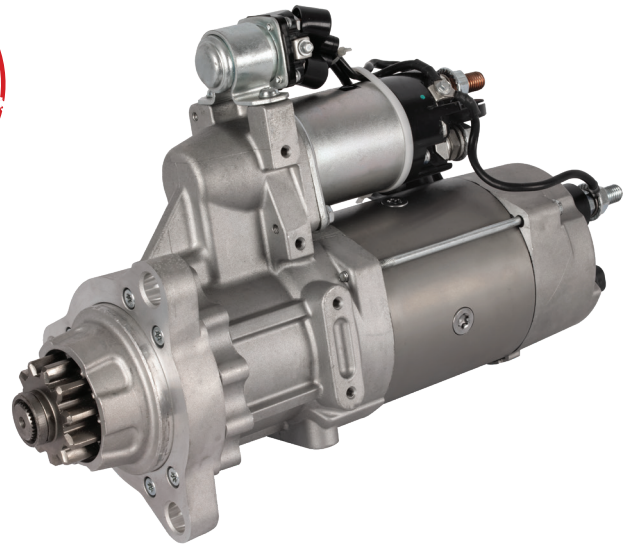
Starter to replace the Delco Remy type Starter



**12V 11t 56mm pinion
(Part # 70-HD123308)**

Can Replace

**8201063
DXS9169
M110603
PCA1479
PCA0479
8200308**



**24V 11t 56mm pinion
(Part # 70-HD123330)**

Can Replace

**8201055
M105732
8200330**



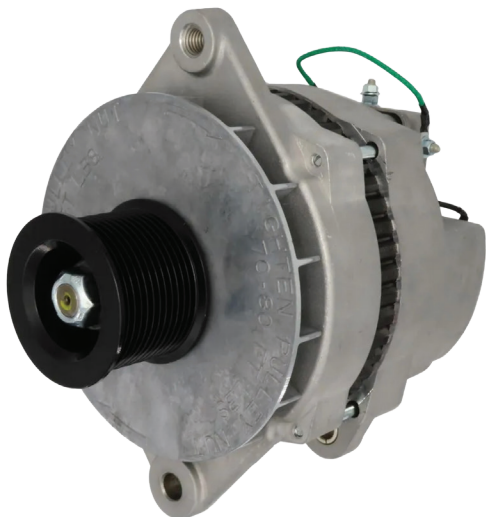
**Dual Earth Post/Studs
(Standard feature at no extra cost)**

Benefits and Features

- Upgraded heavy-duty brush holder
- Standard Dual earth on every starter for wider application coverage
- Developed in partnership with an OE-approved factory

Coming Soon

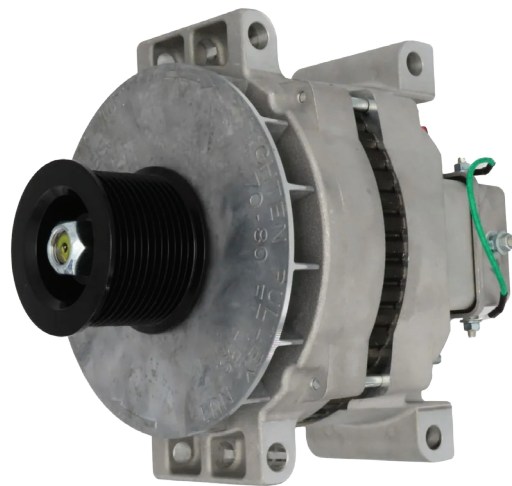
- 12V 12t 46mm pinion (Part # 70-HD123433)
- 24V 12t 46mm pinion (Part # 70-HD123435)
- 12V 12t 44mm (MOD3) pinion suits Detroit applications (Part # 70-HD123434)



(Part # 65-HD131411)

Can Replace

**LBA2407
LBA2394
LBA2394-ISO
110-921
110-555JH0
LBA2128**

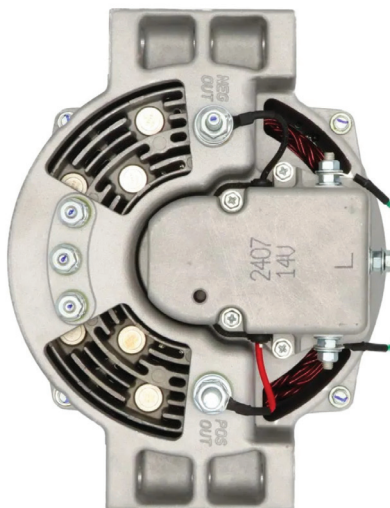


(Part # 65-HD132398)

Can Replace

**LBP2408
110-555PH0
LBP2391
LBP2289
LBP2289-ISO**

12PV Pulley as a Standard option and made from a factory with O.E / OES manufacturing.



Optional Field Isolation

Remove the loop & use the 2 terminals.

Optional Warning Light

Alternator will work with or without connection.

Standard Features 12V 170A

- Optional Field Isolation
- Optional Warning Lamp Circuit
- Insulated Return Standard (above ground)
- Developed in partnership with O.E approved factory
- Replaces many O.E numbers tested for Australian road conditions Supplied with value adding 12 groove pulley as standard

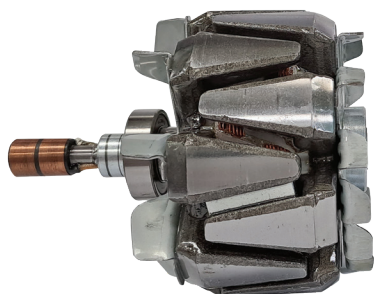
High Performance



(Part # BKS-J180230)



(Part # BKS-PAD230)

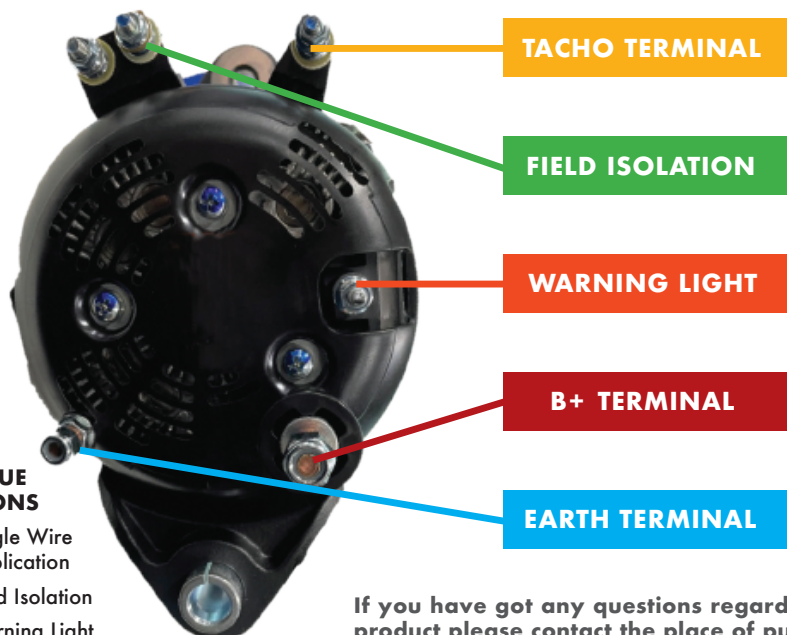


Benefits and Features

- **FIELD ISOLATION:** For fuel tankers and dangerous goods transportation
- **ABOVE EARTH:** To comply with Cummins engine demands and use in marine applications
- **SINGLE WIRE ACTIVATION:** Unit will operate with only a B+ wire and B- wire connected
- **INCREASED RECTIFIER SIZE:** Larger heat sinks on the rectifier allows higher charging efficiency
- **140AMP AT IDLE:** Maintain the vehicles battery packs for ease of start up on the coldest mornings. The use of a Magnetic Rotor has improved the low-down output
- **RATED 230 AMP / 250 AMP:** 12 Volt, 230 Amp (HOT) and 250 Amp (COLD), best in class charge rate
- **W/L OPTION:** Some vehicles carry a warning light option no need to have two or more part numbers
- **OIL SEALED BRUSH ASSEMBLY:** Protection against oil and fuel leaks
- **TACHO OPTION:** Standard feature, don't need it don't use it!
- **12PV PULLEY:** Standard feature for easy fitment NSK BEARINGS
- **Standard fitment for longevity BAR WIND STATOR:** High output at low RPM

UNIQUE OPTIONS

- Single Wire Application
- Field Isolation
- Warning Light



If you have got any questions regarding this product please contact the place of purchase.

cooldrive.com.au

Automotive is in our DNA