



New Product Bulletin

No.3 - 2018

- Air Conditioning
- Electrical Accessories
- Rotating Electrical
- Engine Cooling
- Engine Management
- Tools & Equipment
- Underbody & Suspension
- Workshop Consumables



RUBBER RANGE

COOLDRIVE IS PLEASED TO ANNOUNCE THE INTRODUCTION OF THE ROADGEAR RUBBER RANGE OF PRODUCTS!

FLOOR MATS • CUSTOM FIT TUB LINERS • BOOT LINERS

UTE & VAN TRAY LINERS • BOOT MATS • MUDFLAPS

Whether you are wanting to protect your vehicle's floor carpet from mud and dirt, stones from flicking up from your wheels or stop your luggage from sliding around in the back of your vehicle, we now have you covered with the ROADGEAR Rubber Range.

The ROADGEAR Rubber Range of products are made from 100% natural rubber. This gives you high quality and longevity of the product. Natural rubber can only be black. This means the grey colour has to be made from NBR and this allows the colour to be changed from black to grey.

All ROADGEAR products are made to a very high quality level and pass all the torture tests as they are designed in Australia for Australian conditions.





FLOOR MATS



ROADGEAR floor mats are designed to increase the life of your interiors carpet as they will protect from dust, dirt, water and mud, plus they are easy to clean.

UNIVERSAL SERIES

- Single rubber mats
- Universal fitment
- Hard wearing
- Easy to clean
- Raised sides to help catch dirt

1 YEAR
WARRANTY

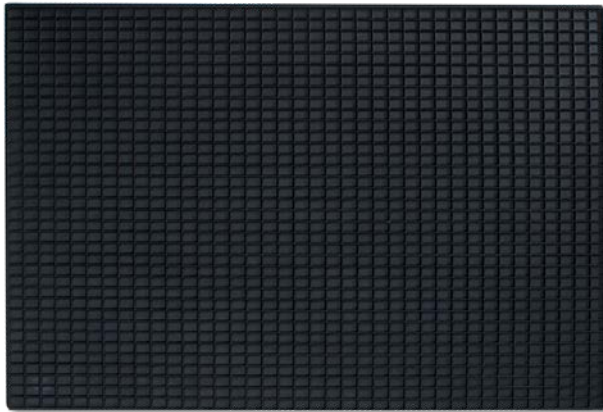
100% NATURAL
BLACK RUBBER



Stippled
backing
for added
grip

PART NO.	DESCRIPTION
LB1	410mm x 600mm - Black
LB2	500mm x 765mm - Black
LB3	440mm x 550mm - Black
LB12	500mm x 345mm - Black

LB1



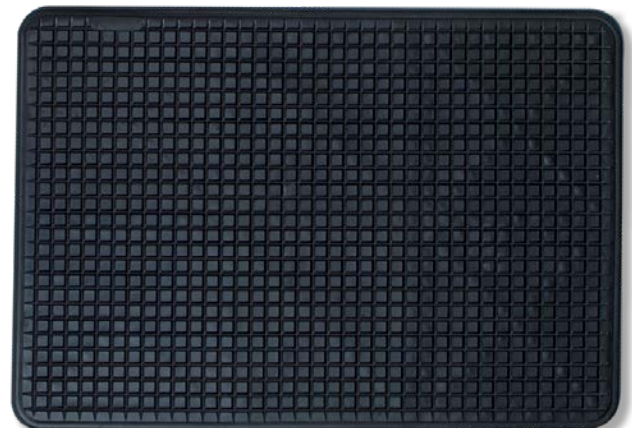
LB2



LB3



LB12



ORAN PARK SERIES

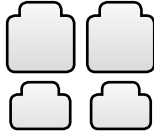
- Set of 4 rubber mats
- Universal fitment
- Hard wearing
- Easy to clean

1 YEAR WARRANTY

100% NATURAL BLACK RUBBER

Part No. LB11

Front & Rear Set of 4



Stippled backing for added grip

PART NO.	DESCRIPTION
LB11	Set of 4 Front/Rear - Black Front: 620mm x 430mm Rear: 420mm x 350mm

GALDER SERIES

- Set of 2 or 4 deluxe rubber mats
- Universal fitment
- Hard wearing
- Easy to clean
- Anti-slip backing
- Unique lip design

2 YEAR WARRANTY

100% NATURAL BLACK RUBBER

HEAVY DUTY

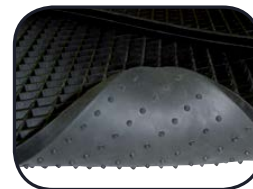
Part No. LB24

Front & Rear Set of 4



Part No. LB37

Front Set of 2



Stippled backing for added grip

PART NO.	DESCRIPTION
LB24	Set of 4 Front/Rear - Black Front: 690mm x 500mm Rear: 410mm x 480mm
LB37	Front Set of 2 - Black - 690mm x 500mm

OUTBACK DEEP DISH

- All year round protection
- Well-type mat for all conditions
- Durable and hard wearing
- Deep dish to catch mud, dirt and water
- Easy to clean
- Anti-slip backing

3 YEAR WARRANTY

100% NATURAL BLACK RUBBER

HEAVY DUTY



Trim to fit

3 YEAR WARRANTY

NBR GREY RUBBER

HEAVY DUTY

FRONT MAT

Part No. LB10

Front Single



Part No. LB10PR

Front Set of 2



FRONT MAT

Part No. RGA9667

Front Set of 2



PART NO.	DESCRIPTION
LB10	Front Single - 760mm x 520mm - Black
LB10PR	Front Set of 2 - 760mm x 520mm - Black

PART NO.	DESCRIPTION
RGA9667	Front Set of 2 - 760mm x 520mm - Grey

REAR MAT

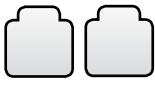
Part No. LB9

Rear Single



Part No. LB9PR

Rear Set of 2



REAR MAT

Part No. RGA9671

Rear Set of 2



PART NO.	DESCRIPTION
LB9	Rear Single - 500mm x 510mm - Black
LB9PR	Rear Set of 2 - 500mm x 510mm - Black

PART NO.	DESCRIPTION
RGA9671	Rear Set of 2 - 500mm x 510mm - Grey



CUSTOM FIT TUB LINER MATS



Custom Fit Tub Liner Mats are specifically designed and moulded to fit straight into the back of your single cab or dual cab ute without any modification. They are a quick and easy solution to prevent cargo from slipping in the back of the vehicle as well as protecting from spills and grime.

- Made from durable fibre reinforced rubber
- Tear, crack and warp resistant
- Resistant to most chemicals and liquids
- Resistant to extreme temperatures
- UV resistant
- No cutting required
- Dimpled underside for grip
- Custom moulded to suit tray/boot
- Skid resistant
- Roll out, job done
- Reduces noise
- Easy to clean



2 YEAR
WARRANTY

100% NATURAL
BLACK RUBBER

HEAVY DUTY

PART NO. DUAL CAB	PART NO. EXTRA CAB	PART NO. STANDARD CAB	MAKE	MODEL	MODEL	YEAR
RGA9913	RGA9912	RGA9911	Ford	Ranger	PK	2007 +
RGA9916	RGA9915		Ford	Ranger	PX	2012 +
		RGA9901	Ford	Falcon	BA - BF	2008 - 13
		RGA9925	Great Wall	Great Wall	V200 & V240	2010 +
RGA9923	RGA9922		Holden	Colorado	RC	2008 - 12
RGA9926			Holden	Colorado	RG	2012 +
		RGA9900	Holden	Commodore	VE	2007 +
RGA9906	RGA9905		Holden	Rodeo	RA	2003 +
RGA9926			Isuzu	D-Max	D-Max	2012 +
RGA9910			Mazda	BT50	BT50	2007 - 11
RGA9919	RGA9918		Mazda	BT50	BT50	2012 +
RGA9908			Mitsubishi	Triton	ML	2006 - 08
RGA9921**			Mitsubishi	Triton	MN & MQ	2009 +
RGA9907			Nissan	Navara	D22M	Up to 2006
RGA9924**			Nissan	Navara	D40 & NP300	2005 +
RGA9904**	RGA9903	RGA9902	Toyota	Hilux	692N	2006 +

** Includes Trim Lines For Later Models



BOOT LINERS



Boot Liners are a quick and easy solution to prevent cargo from slipping in the boot of the vehicle as well as protecting from spills and dirt.

- Long wearing premium rubber
- Easy to clean
- Protects against dirt, grime and spills
- Fits most sedans, wagons and 4x4's
- Non-slip material
- Available in grey or black
- Chemical resistant and UV stabilised
- Anti-slip backing
- Trim to fit



1 YEAR
WARRANTY

100% NATURAL
BLACK RUBBER

NBR GREY
RUBBER

PART NO.	DESCRIPTION
RGABL-BK	1200mm x 825mm - Black
RGABL-GY	1200mm x 825mm - Grey



UTE & VAN TRAY LINERS



Ute & Van Tray Liners are available in common sizes to suit the required tray for your vehicle. These prevent cargo from slipping and sliding in the back of your vehicle, preventing damage.

- Suits small/large utes and vans
- Easy to clean
- Super Tough Rubber
- Anti-slip backing
- Hard wearing
- Oil and spill resistant
- Trim to fit



Trim to fit



Stippled backing for added grip

2 YEAR
WARRANTY

100% NATURAL
BLACK RUBBER

HEAVY DUTY



PART NO.	DESCRIPTION
TL213152	2130mm x 1520mm x 25.0kg - Black
TL244152	2440mm x 1520mm x 26.5kg - Black
TL244183	2440mm x 1830mm x 33.5kg - Black
TL305125	3050mm x 1520mm x 37.0kg - Black
TL305183	3050mm x 1830mm x 43.0kg - Black



BOOT MATS



Boot Mats are a quick and easy solution to prevent cargo from slipping in the boot of the vehicle as well as protecting from spills and dirt.

- Long wearing premium rubber
- Fits most sedans, wagons and 4x4's
- Chemical resistant and UV stabilised
- Unique retentive design
- Easy to clean
- Non-slip material
- Anti-slip backing
- Protects against dirt, grime and spills
- Available in grey or black
- Trim to fit

2 YEAR
WARRANTY

100% NATURAL
BLACK RUBBER

NBR GREY
RUBBER

HEAVY DUTY



Trim to fit



Stippled backing for added grip



PART NO.	DESCRIPTION
RGABM1-BK	1410mm x 1090mm - Black
RGABM1-GY	1410mm x 1090mm - Grey



MUDFLAPS



These Mudflaps are universal fit and can be used on cars, 4WD's, utes, vans, trailers, caravans, trucks and buses. Made from durable rubber they prevent loose gravel or mud from being thrown back from your tyres.

UNIVERSAL

- For use on cars, 4WD's, utes, vans, trailers, caravans, trucks and buses
- Easy to fit
- Prevents panel damage
- Strong and flexible rubber
- Easy to keep clean
- UV stabilised
- Resists most chemicals and solvents

1 YEAR
WARRANTY

100% NATURAL
BLACK RUBBER

HEAVY DUTY

PART NO.	DESCRIPTION
RGAMF1009B	Set of 2 - 250mm x 230mm - Black
RGAMF1209B	Set of 2 - 300mm x 230mm - Black
RGAMF1409B	Set of 2 - 350mm x 230mm - Black
RGAMF1112B	Set of 2 - 280mm x 275mm - Black
RGAMF1412B	Set of 2 - 350mm x 280mm - Black



MOULDED UNIFIT

- For use on cars, 4WD's, utes, vans and trucks
- Easy to fit

- Prevents panel damage
- Resists most chemicals and solvents
- Easy to keep clean
- Made from rubber/PVC blend
- UV Stabilised

1 YEAR
WARRANTY



PART NO.	DESCRIPTION
RGAMF001	Set of 2 - 290mm x 210mm - Black
RGAMF002	Set of 2 - 320mm x 210mm - Black
RGAMF003	Set of 2 - 390mm x 240mm - Black
RGAMF004	Set of 2 - 410mm x 280mm - Black