



PORTABLE POWER PACK

PORTABLE POWER. ANYWHERE.



HU6500 MODIFIED SINE INVERTER

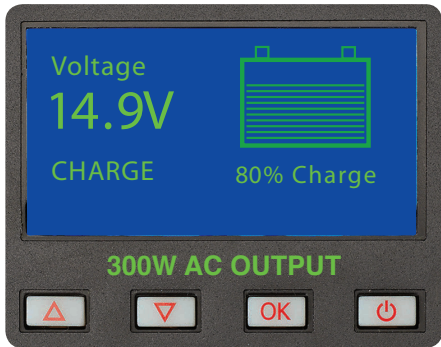
HU6501 PURE SINE INVERTER

Portable Power Pack 12V

- Place a 12V Battery inside & it becomes a 12V Battery Charger, a portable power station, a battery management system & a dual battery system all in one unit
- Can be re-charged in 4 ways, including DC-DC from your vehicle, 2m DC Car Charger lead included
- 7A AC & 7A DC Battery Charger included
- Charges Lithium (LiFePO4), Calcium, AGM, GEL & Lead Acid Batteries
- Built-in 300W inverter (Modified or Pure Sine Wave inverters) with 240V AC power outlet
- Multi-function LCD Control Panel Display with nett watts & Time Tracker technology
- 2 x 10A 12V Cigarette accessory sockets, 1 x 50A Anderson style plug, 1 x 5V 2A USB socket
- Off/On Battery isolator switch
- 2 x Protected external high current battery terminals
- Strong easy carry handle
- Accepts all battery sizes up to 130ah (Battery not included with unit)

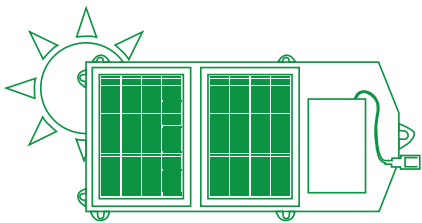
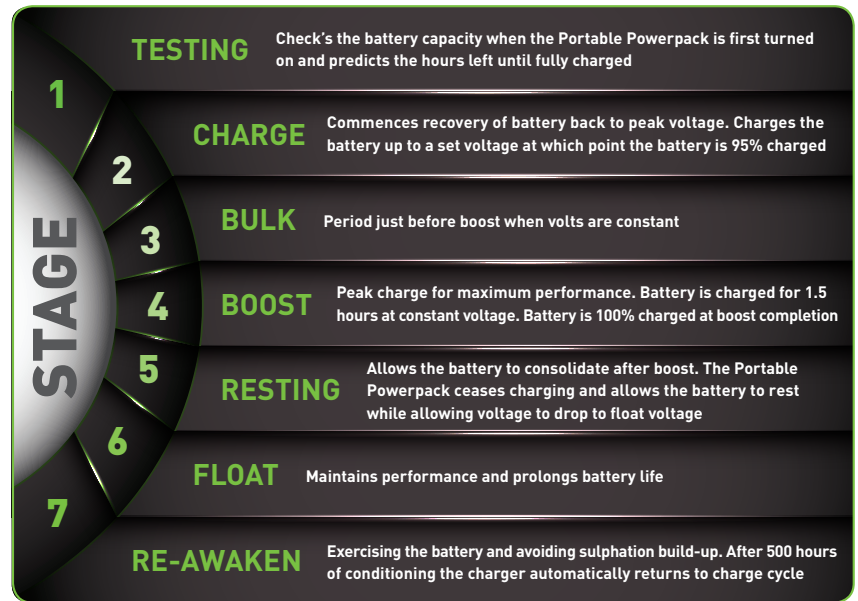
Environmental - Friendly

- Silent
- Fuel free
- Solar rechargeable
- Maintenance free
- No running costs
- No fuel emissions



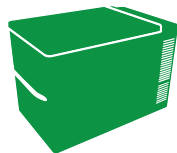
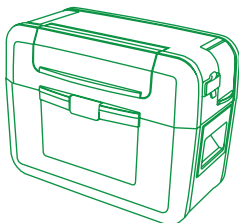
Time Tracker Battery Management Screen

- Battery type selection & set-up
- Analyse battery condition
- Battery percentage capacity
- Hours remaining before fully charge
- Watts (W) & volatge (V) reading
- Charge cycle stage



Recharge

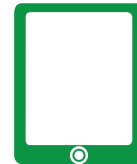
Via mains, vehicle, truck or solar panels



40L Fridge/Freezer (12V) 168hrs



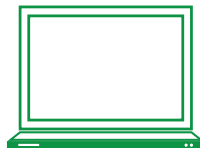
Mobile (USB) 130 Recharges



Tablet (USB) 65 Recharges



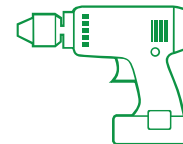
12V LED Lamp 220hrs



Laptop (240V) 20 Recharges



TV (240V) 72hrs



Cordless Drill (12V) 12 Recharges



Digital Camera (240V) 110 Recharges

Store

Once recharged, your Portable Powerpack becomes a 240V AC, 12V DC Portable Power Station, Battery Management & Dual Battery System all in one. (Battery not included with unit)

Recharge

Use the power collected in the Portable Power pack to recharge or power your equipment & devices on the go.

* Appliance guide is based on the Portable Power pack being fitted with a 12V 130Ah Deep Cycle Battery. Rating & running times are a guide only, dependent on the use & conditions.

