

Garrett

ADVANCING MOTION



Garrett® Original Turbos are the boost behind millions of cars, vans and trucks around the world. Original technology specified by vehicle manufacturers, 100% compatible with engine management systems, and optimized for power, fuel efficiency and emissions compliance.

Just about every major automotive manufacturer – including BMW, Ford, GM, Peugeot, Hyundai, Volvo, Volkswagen and more – trusts Garrett turbos to deliver exceptional performance and durability.

Technologies

Garrett's world-leading Aftermarket portfolio is brimming with original technologies.



VARIABLE NOZZLE TURBINE (VNT)

Turbine wheel exhaust flow control results in higher torque, more power, better transient response and cleaner combustion.



WASTEGATE

A turbine exhaust gas bypass controls boost pressure, regulates turbo speed and improves engine efficiency.



DUAL-STAGE - VNT PAIRED WITH WASTEGATE OR FREE

Floating turbos helps boost premium engine performance.



FREE FLOATING

Advanced aerodynamics and bearing systems help improve fuel efficiency in large off-highway commercial applications.

Why customers choose Garrett Original Equipment?



QUALITY ENGINEERING

Garrett Original Turbos spin at up to 300,000 rpm and operate at up to 1050°C.



LEADING PERFORMANCE

Class-leading power helps boost high-end torque by 15-40% over non-original models.



+ 10% FUEL ECONOMY

The boost behind benchmark performance and fuel economy.



EMISSIONS REDUCTION

Up To 28% Emissions Reduction. A key enabler for engine efficiency and reducing NOx emissions.

Garrett

ADVANCING MOTION

GTB2256VK for Ford Ranger; Mazda BT-50
P5AT 3.2L I5 (PX1 PX2)



TC1023

MGT1446MZGL for Holden Trax Cruze
A14NET-EURO 5



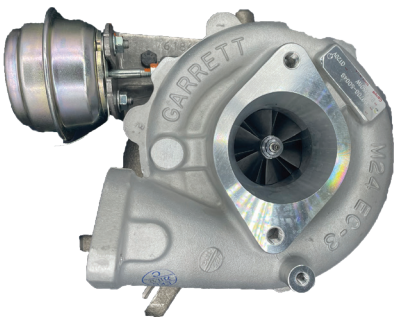
TC1009

GTA2052V for Nissan Patrol
(Direct Injection) 3.0I ZD30DDTi



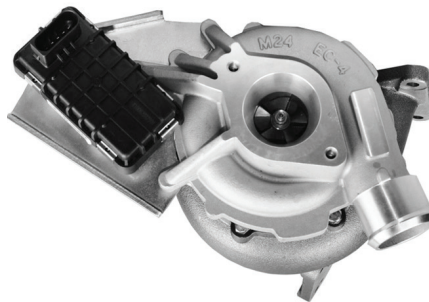
TC1004

GT2056V for Nissan Navara D40 YD25DDTi
Spain Built (4 bolt)



TC1129

GTB1749V for Ford Ranger Transit; Mazda
BT-50 2.2I P4AT CRD



TC1116

GTB1752VKL for Holden Colorado Trailblazer
LWN 2.8L CRD



TC1118

GTA2359V for Toyota Landcruiser
VDJ76/78/79 Series 4.5L V8 (Single Turbo)



TC1069

GTD2056V for Ford Ranger Everest; Mazda
BT-50 (Late build PX2 PX3)



TC1073

GT1544V for Hyundai i30 DB51T D4FB
1.6L CRD



TC1253

GARRETT REDBOOST

Redboost is the cost-effective turbo series from Garrett, purpose-designed to create choice for Aftermarket customers across a wide range of applications. The Redboost line-up has been re-engineered to benefit from Garrett's renowned commitment to performance and reliability.



Quality, reliability & great value for money

Garrett® Redboost sets the standard for Aftermarket replacement turbo quality and reliability. Every Redboost product is manufactured using Garrett's Original turbo production process, and rigorously tested for performance and durability.

High-heat resistant materials – proven through 500 rounds of thermal shock testing – make Redboost turbochargers up to twice as durable as some competitor replacement products.

Suits Toyota Hilux 1GD-FTV 2.8l - Bolt In



TC1155.G

Suits Toyota Hilux 1KD-FTV 3.0l - Bolt In



TC1002.G

Garrett
ADVANCING MOTION

Garrett

POWERMAX TURBO

POWERMAX™

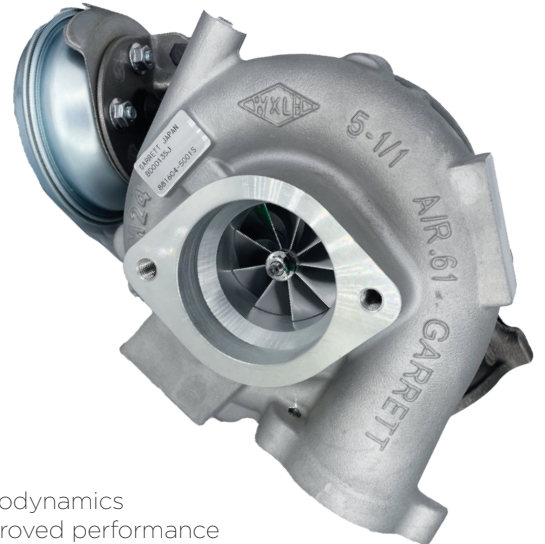
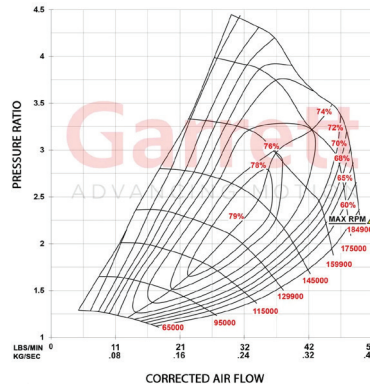
PowerMax™ direct fit performance turbochargers are engineered for increased engine performance while maintaining OEM direct fitment. With professional engine calibration and tuning, Garrett PowerMax will outperform the OEM product.

All Garrett PowerMax™ direct fit turbochargers are outline interchangeable with the OE turbocharger ensuring a perfect fit every time.

Suits Toyota Landcruiser VDJ Series 4.5L 2007 ~ 2018

This Garrett PowerMax™ direct fit turbocharger is designed for the 4.5L 1VD-FTV VS diesel engine platform found in the 2007-2018 Toyota Land Cruiser. The forged, fully machined compressor wheel designed for the G-Series product line increases flow by 20% over the OE wheel.

The power represented above was recorded on a chassis dyno with a modified ECU and OEM fuel delivery system enabling the engine to produce 164kW from the OE standard 151kW.



TC1069.UPGRADE

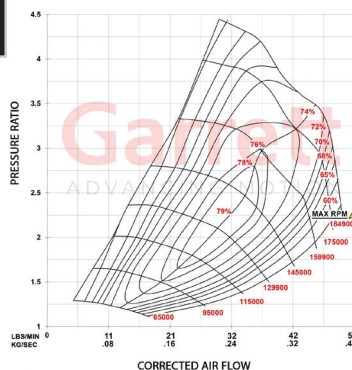
Features:

- G-Series compressor wheel aerodynamics
- Wider compressor map for improved performance
- 20% more flow than the OE turbocharger
- VNT variable geometry technology

Suits Ford Ranger; Mazda BT-50 3.2 P5AT PXI,II and III 2011 ~ 2021

This Garrett PowerMax™ direct fit turbocharger is designed for the 3.2L Duratorq 5 cylinder diesel engine platform found in the 2011-2021 Ford Ranger PXI PXII PXIII and the 2011-2020 Mazda BT-50.

The forged, fully machined compressor wheel designed for the GTX Gen II product line increases flow by 20% over the OE wheel. With the correct engine calibration, this enables the engine to be tuned up to 172kW from OE standard 147kW.



TC1023.UPGRADE

Features:

- GTX Gen II compressor wheel aerodynamics
- Wider compressor map for improved performance
- 20% more flow than the OE turbocharger